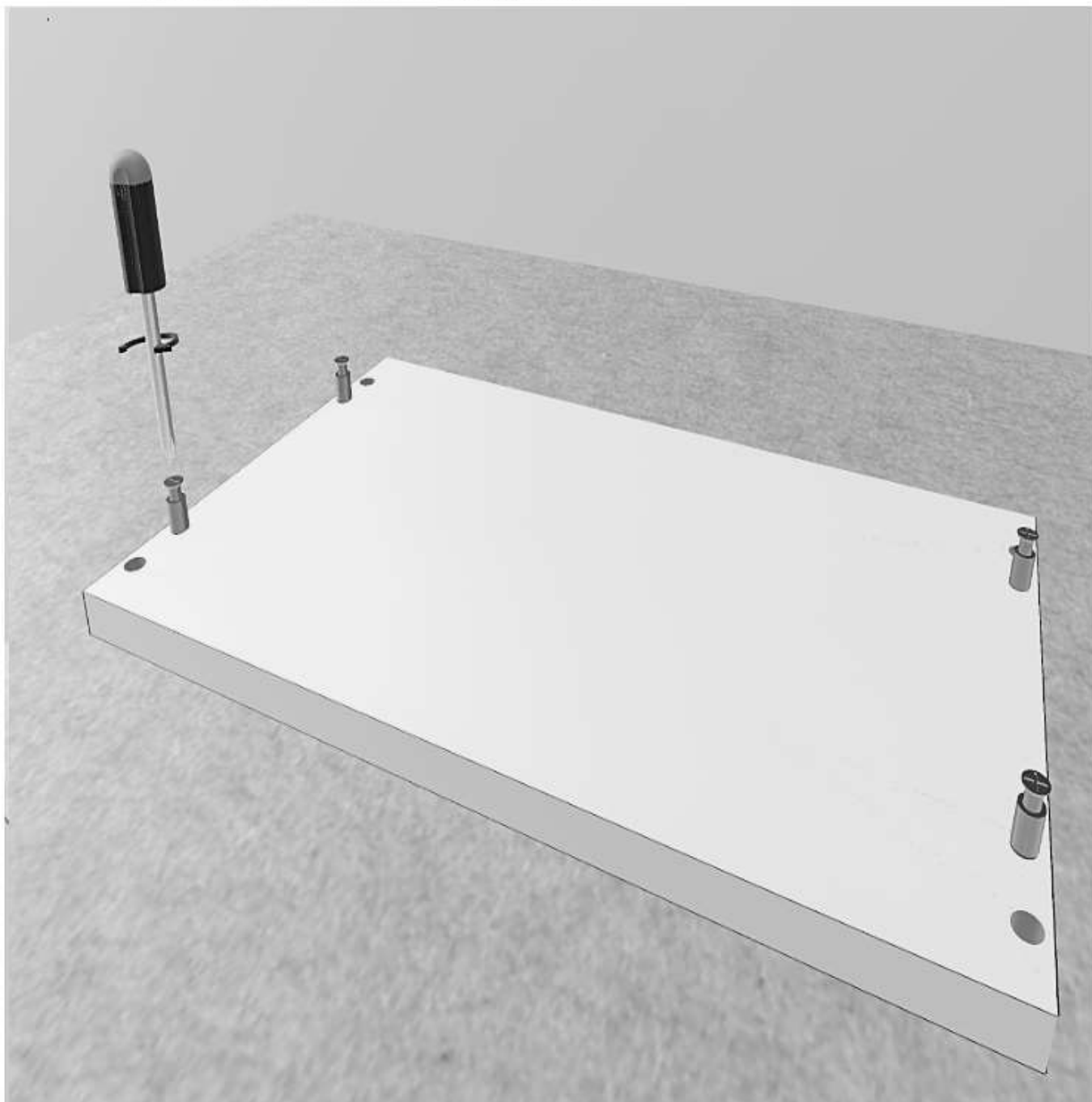


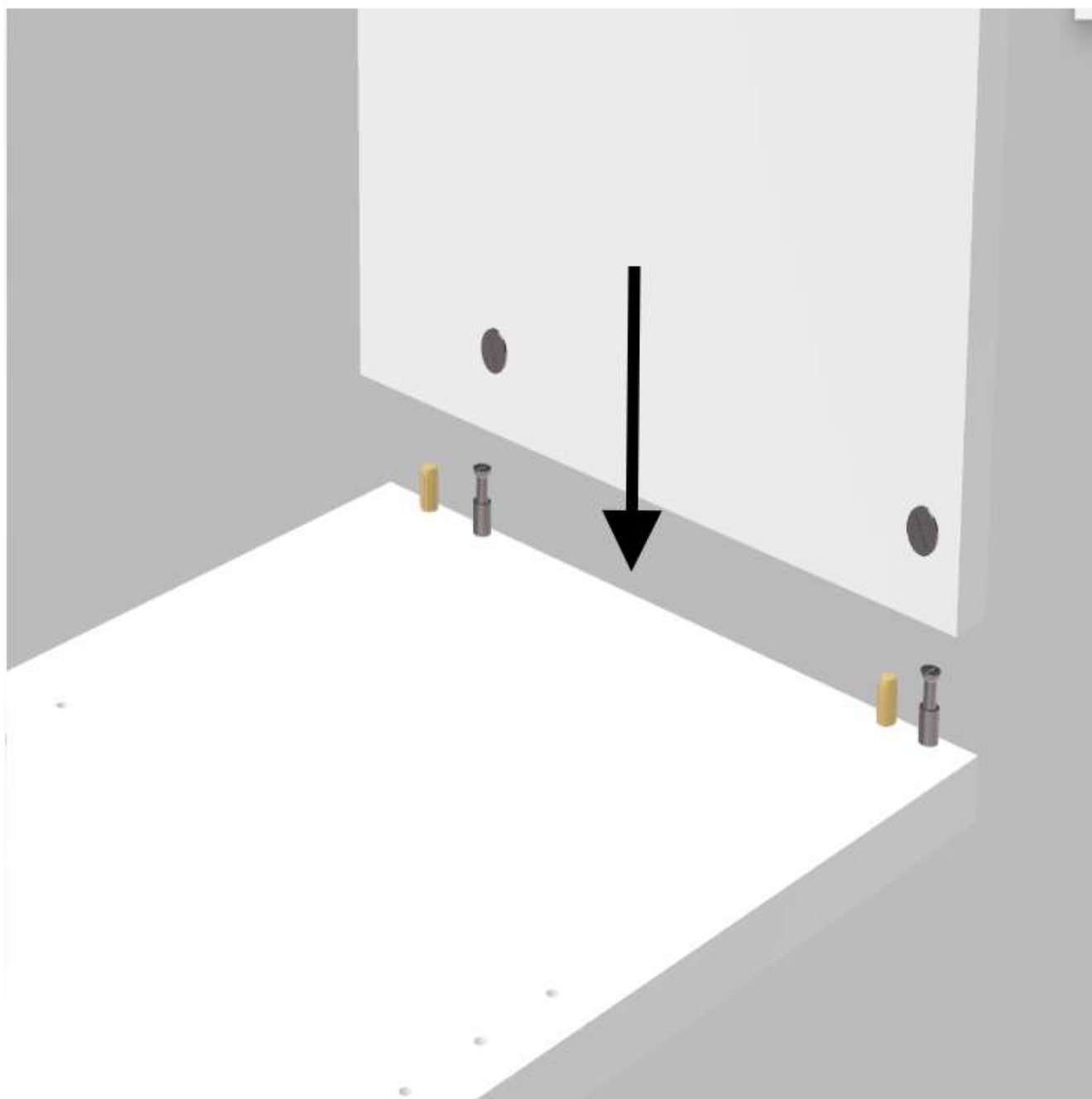
## ANGOLO CABINA

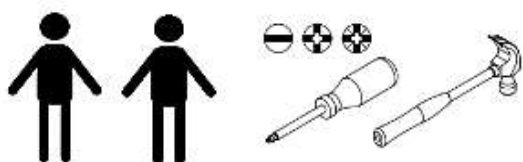
**POSIZIONARE I FIANCHI SU DEL CARTONE  
ED AVVITARE I FIANCHI**



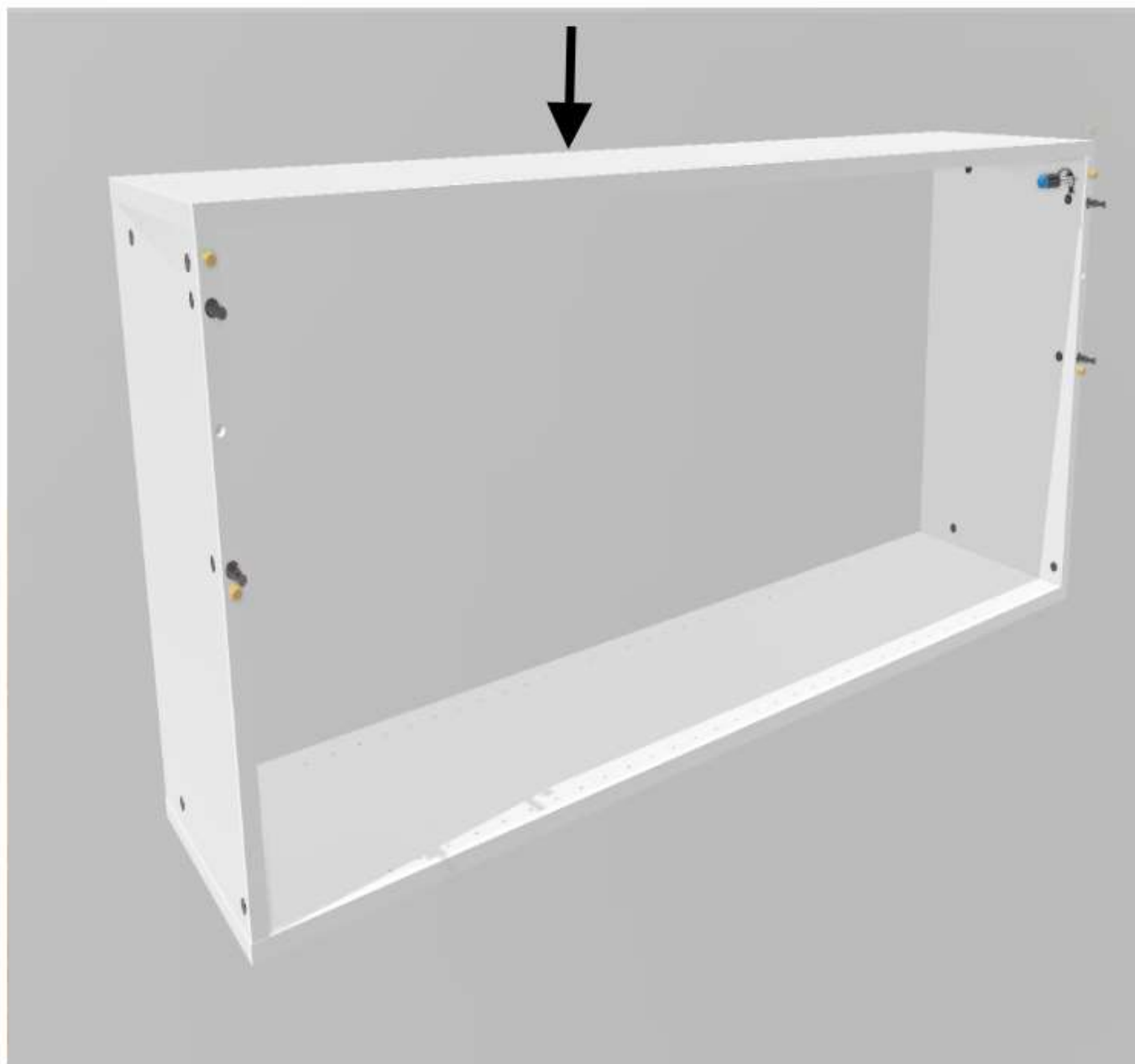


## INCASTRARE LE PARTI E BLOCCARLE



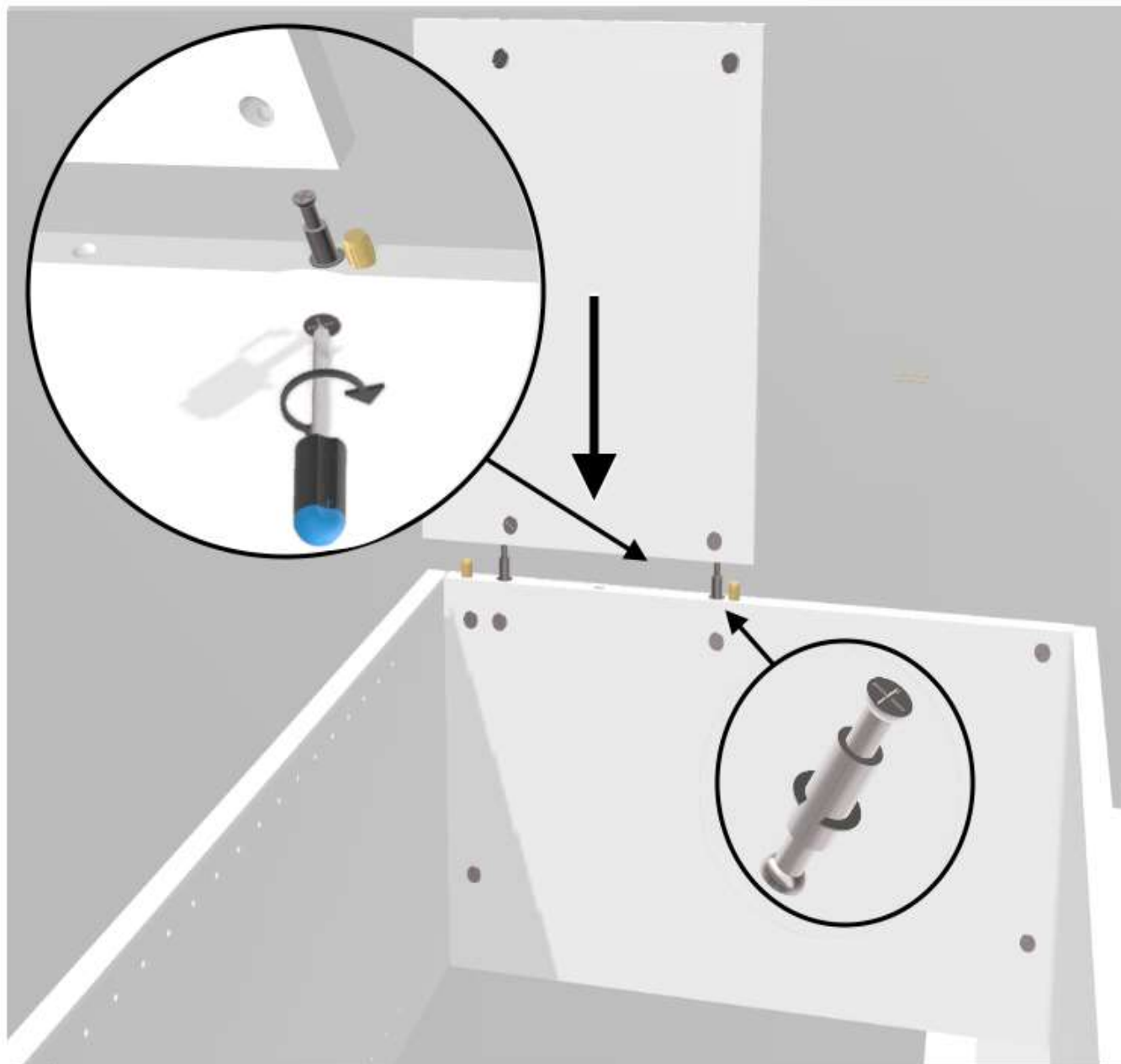


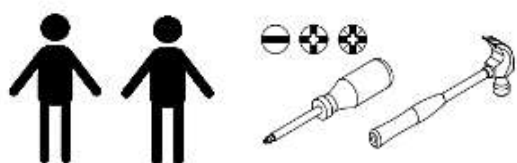
## INCASTRARE LE PARTI E BLOCCARLE



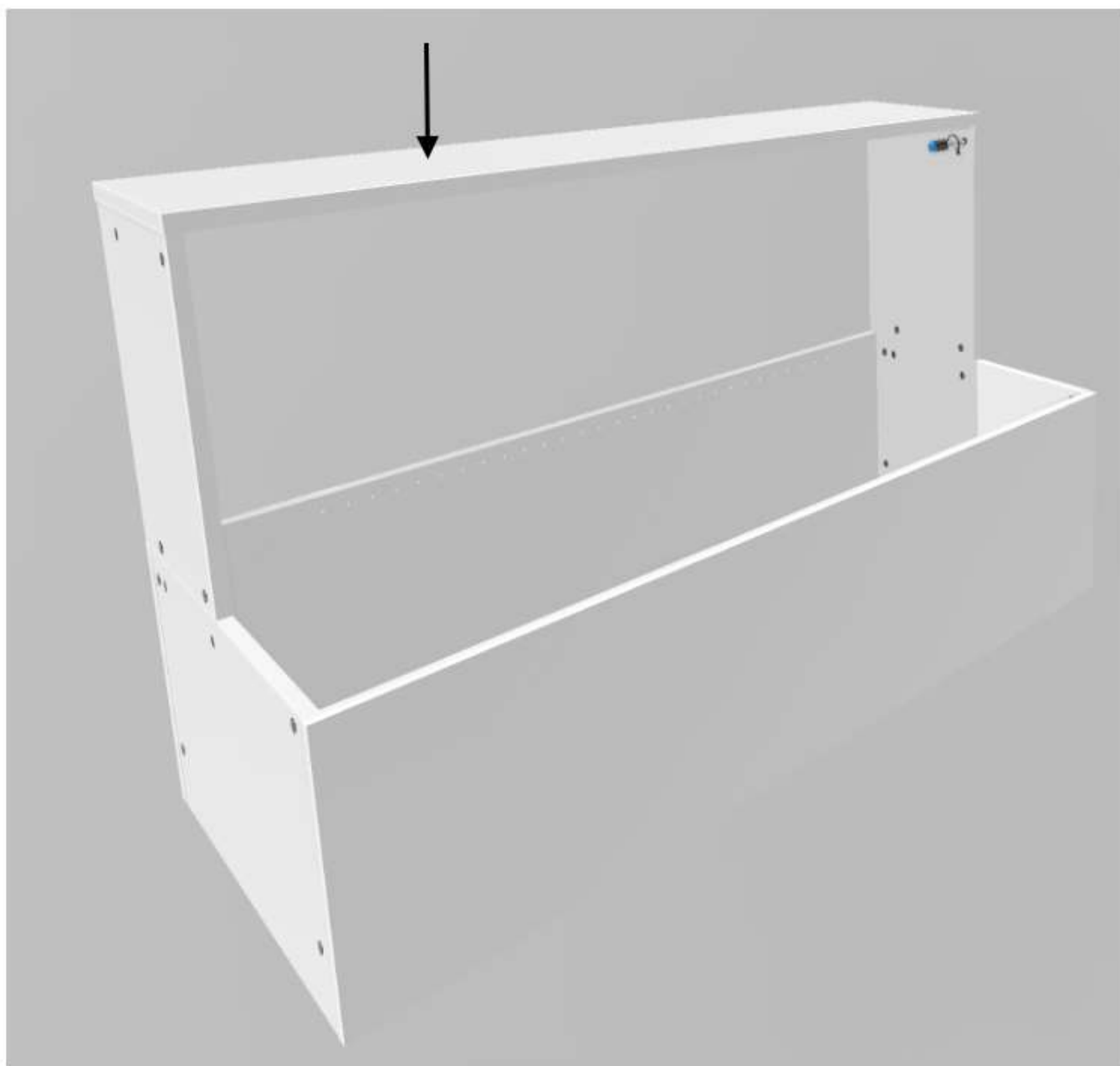


## RIBALTARE L'ANGOLO, INCASTRARE LE PARTI E BLOCCARLE



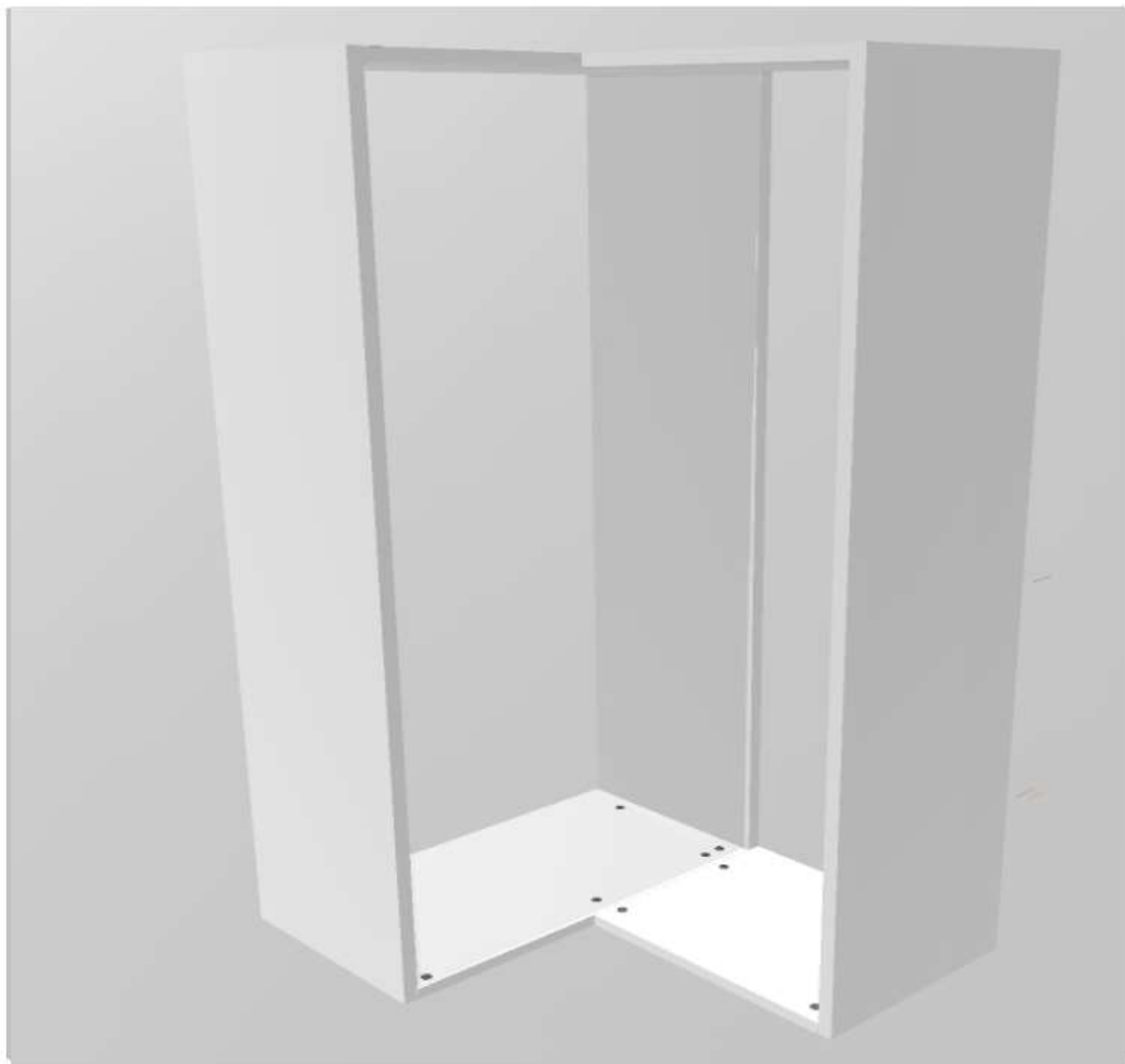


## INCASTRARE IL FIANCO E BLOCCARLO



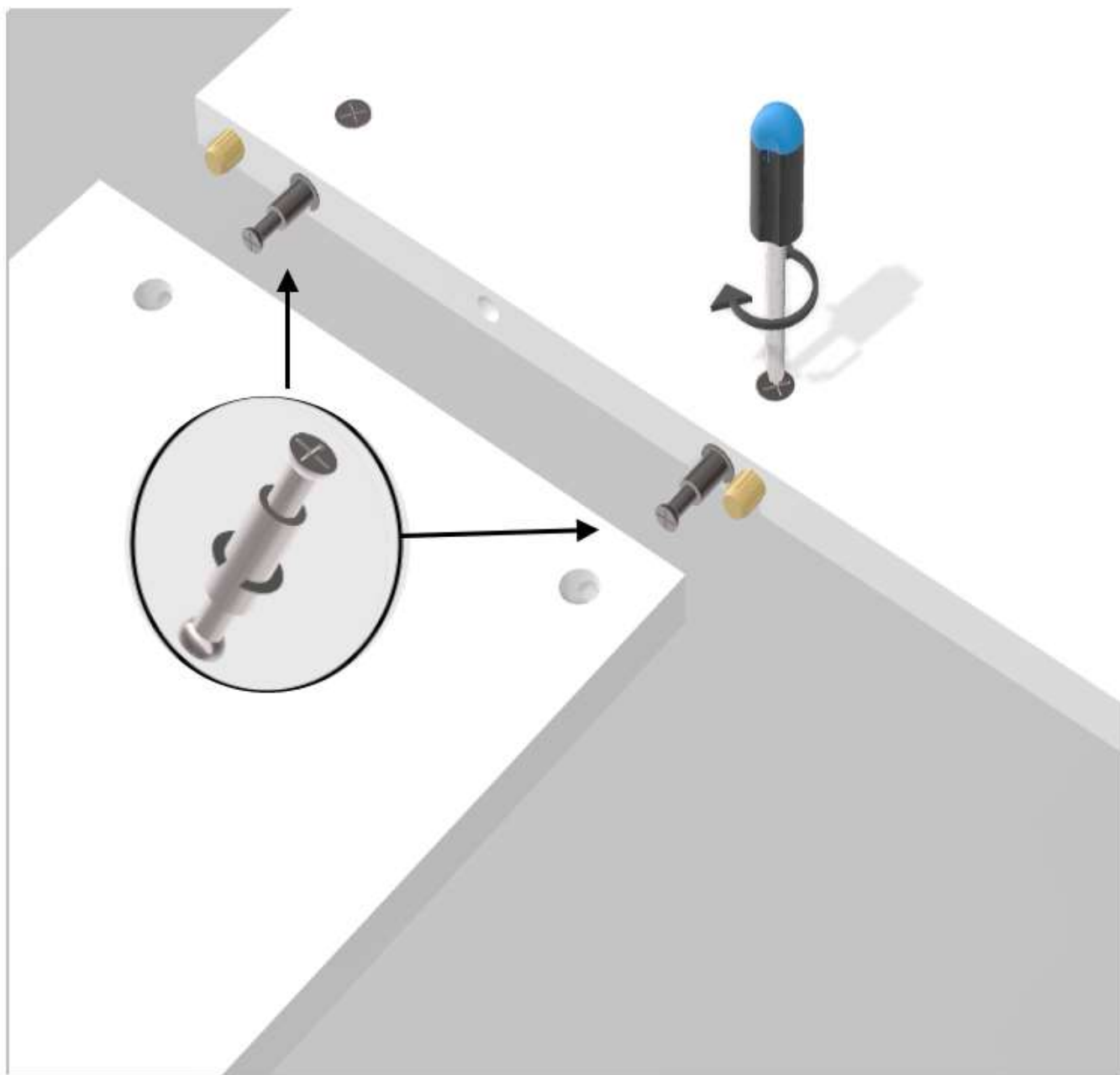


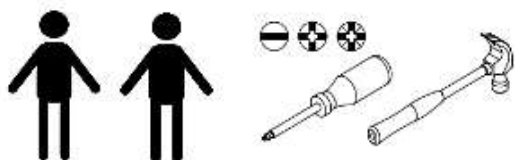
## ALZARE L'ANGOLO DELICATAMENTE





## ASSEMBLARE I PIANI





**FISSARE L'ANGOLO ALLE PARETI CON LE APPOSITE STAFFE E POSIZIONARE I PIANI**



**8**